

# Mid-Atlantic Chapter Solid Waste Association of North America



**SWANA**<sup>®</sup>

SOLID WASTE ASSOCIATION  
of North America

## Mid-Atlantic Chapter of SWANA Board of Directors

### President

Mike Houlihan  
*GeoSyntec*

### Vice-President

Martin Sanford  
*Camp, Dresser & McKee*

### Secretary

Doug Sawyers  
*Malcolm Pirnie, Inc.*

### Treasurer

Gregorio Africa  
*Maryland Environmental Service*

### Chapter Director

Stephen Lippy  
*BSWM, Baltimore County*

### Past President

Evelyn Tomlin  
*Howard County*

### Directors

Robert DeMarco  
*Anne Arundel County*

Tony Duckett  
*Washington DC, SWCD*

Frank Henderson  
*Harford County*

Tom Houska  
*Delaware Solid Waste Authority*

Francis Jones  
*Calvert County*

Dana Murray  
*SCS Engineers*

Elizabeth Smolen  
*Prince Georges County*

Laura Thomson  
*Northeast Maryland Waste  
Disposal Authority*

Mehal Trivedi  
*Frederick County*

## SOLID WASTE NEWS For Waste Professionals

November 16, 2004

### President's Message

By Mike Houlihan

Welcome to a new year as a member of the Mid-Atlantic Chapter of SWANA! Our chapter is very active each year, and this year will be no different. Our most recent activity was held on September 10<sup>th</sup>, when we held our Annual Meeting and technical seminar. At the meeting, we elected a new group of officers and Directors, who are identified on the left side of this page; thanks to each of you for contributing your time and effort to the organization, and a special thanks to our outgoing President, Evelyn Tomlin of Howard County, for her leadership and service as President of the Chapter for the past two years. At the meeting, we also discussed a variety of technical topics addressing recycling, bioreactors, and landfill facility management. Thanks to all of you who joined us and made the meeting a valuable use of time, and thanks to Dana Murray for all of her work in organizing the event.

For the upcoming year, the officers and Board are planning a slate of activities to address issues that are important to you in your everyday solid waste management activities, whether they are related to collection, facility operation, design, planning, or construction. At our meeting on November 10<sup>th</sup>, we developed a meeting schedule for the upcoming year; associated activities will be decided upon at the next Board Meeting on January 19<sup>th</sup>, 2005. See Agenda on page 4. Save the dates! Note that we plan to continue the recent practice of holding luncheons and facility tours after several of the Board

meetings. We also plan to address some important administrative issues, such as balancing our budget and reviewing our bylaws. Finally, we plan to coordinate with the National SWANA group to keep you updated on issues that affect your work, like maximizing the benefits of landfill gas tax credits and responding to legal challenges to the recent Research, Development, and Demonstration Rule. Our goal is to make the chapter a valuable resource to each of our more than 200 members.

We look forward to working with each of you to keep our Chapter active and valuable to the members. Please join us for one of the upcoming tours and the technical events that we'll be holding throughout the year. And have a happy holiday season.

### Education Committee Seeks Feedback on Survey Letter

The education committee is still waiting for replies from the local school districts so we can begin to formulate an outreach proposal to the Board. If any members send their children to private schools, we would appreciate input from them as well. Reply to [khartline@co.ba.md.us](mailto:khartline@co.ba.md.us) or [ehsmolen@co.pg.md.us](mailto:ehsmolen@co.pg.md.us). Anyone who needs the letter to be mailed, please email Kerry Hartline with the name, address and any other contact information.

# Wastecon 2004 Silver Excellence Award

By John O'Hara

Last March 24<sup>th</sup>, after the chapter's Board of Director's meeting, chapter members had the opportunity to tour the Baltimore City Composting Facility (BCCF) located on Quarantine Road in Baltimore. The informative tour, led by facility manager David Hill, provided members with a comprehensive overview of the facility's operation. The facility's impressive performance was recognized at Wastecon 2004 in Phoenix where on September 24<sup>th</sup> BCCF was honored with the SWANA Composting Silver Excellence Award. On hand to receive the award were George Winfield, Baltimore City's DPW Director, chapter member Laura Thomson representing the Northeast Maryland Waste Disposal Authority, and several officials representing plant owner/operator Veolia Water North America, including David Hill.



Steve Lippy, Frank Henderson and George Winfield at Wastecon 2004 in Phoenix

The BCCF, which began operation in 1988, was developed by the Authority in partnership with Baltimore City on a 7.5 acre site located near the City's Quarantine Road Landfill in the Hawkins Point area of Baltimore City. Facility construction was financed through the issuance of \$20.8 million in revenue bonds by the Authority. The facility is owned and operated by Veolia Water North America (formerly U.S. Filter Operating Services) under a series of service, operations, and marketing agreements. Veolia processes all of the anaerobically digested biosolids (i.e. sludge) produced at the City's Back River Wastewater Treatment Plant, the largest plant in Maryland. Deliveries average 190 wet tons of biosolids per day at 20% solids content, which produces about 36,000 tons (85,000 cubic yards) of compost annually. Of note, 100% of all incoming materials are recycled and leave the site as usable products. The facility must comply with seven different regulatory permits and, to Veolia's credit, has had no reportable violations in the last five years.

The heart of the composting process is inside a 90,000 ft<sup>2</sup> building which also houses a laboratory, maintenance shop, and control room. The in-vessel process, a variation of the Fairfield-Paygro process, takes place in one of two adjacent reactors, each consisting of eleven side-by-side 6,000 ft<sup>3</sup> capacity rectangular cells. Two large "Extractavators," which bridge each set of cells, ride back and forth on rails to fill, mix, and empty each cell at the appropriate time during the composting process. Compost leaving the building is further cured on an 85,000 ft<sup>2</sup> covered pad adjacent to the in-vessel building. A 10,500 ft<sup>2</sup> finished product storage area, administration building, and admixture storage areas/silos are also located on the property. The composting process produces a "Class A-Exceptional Quality" compost per federal regulations which allows for unrestricted marketing of the product.

Biosolids are delivered to the facility in sealed transport trailers and are discharged into covered receiving hoppers. Biosolids are transferred to mixers via screw conveyors where a mixture of woodchips produced from kiln dried wood and saw dust is added. Woodchips serve as a bulking agent to promote proper aeration during in-vessel composting while saw dust is used to regulate the carbon/nitrogen ratio and moisture content. High carbon content combustion ash, a waste product of boiler operations, is added to control odor. Woodchips remaining in the compost product are screened out for reuse.

The biosolids/woodchip mixture is conveyed to the in-vessel cells where the aerobic composting process is controlled by aerating the cells using blowers connected to each cell. Airflow rates are regulated to control moisture and heat levels. In-vessel composting at 136°C pasteurizes the composting mixture, killing pathogenic organisms. The Extractavator mixes each cell's contents at the halfway point of the in-vessel process. The facility is equipped with a two-stage sodium hydroxide/sodium hypochlorite scrubber to treat air discharged from the in-vessel cells. However, as a result of careful process control, the scrubbers are seldom needed.

After 14 days in-vessel, the compost is removed from each cell and conveyed to the covered curing pad where it is aerated for 3-5 days in static piles, maintaining a temperature of 55°C which meets federal regulatory requirements for a Process to Further Reduce Pathogens (PFRP). Static pile aeration is followed by an additional curing period during which pile temperatures are maintained at 45°C. After 30-days of curing, the compost is screened for market.

# to the Baltimore City Composting Facility

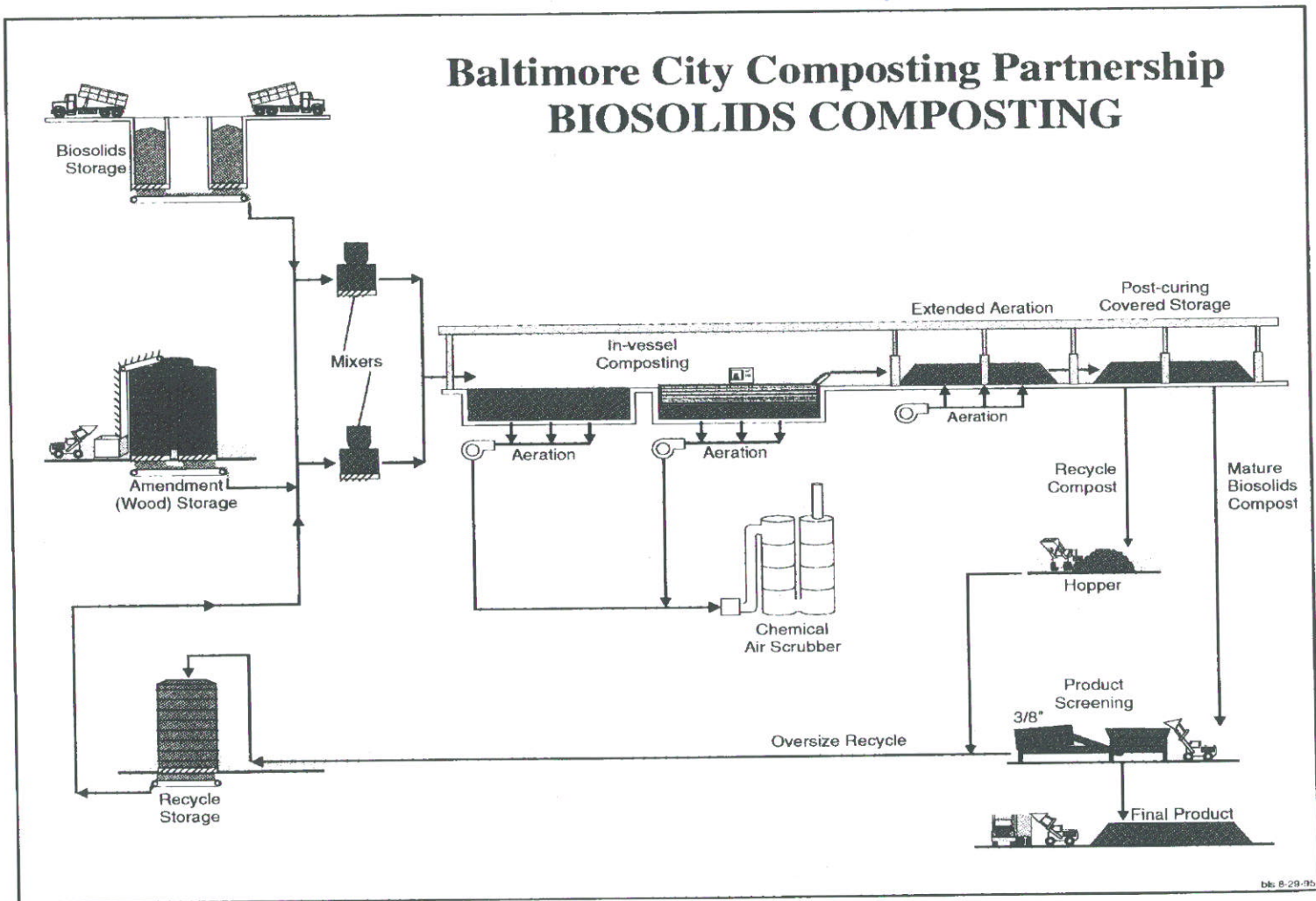
In a recent study conducted by Johns Hopkins University, ORGRO was tested as a soil amendment to chemically bind lead thereby making it unavailable for uptake by the blood stream if the soil is inhaled or ingested. This is a promising low-cost solution to lead poisoning in urban areas.

Since 1997, a comprehensive marketing program managed by Veolia has resulted in the sale of all compost produced. Most compost is marketed in the Maryland-Virginia area although sales have occurred to buyers as far away as New York. Several products are marketed by Veolia under the ORGRO® trade name including pre-

mium compost (fine screened), whole compost (more coarsely screened), and mulch (wood chips from the in-vessel process). The customer base is diverse, including both public and private sector buyers in the turf maintenance, landscaping, and potting mix industries. ORGRO® has been used in Baltimore City parks and for turf maintenance at the official residence of the Vice President of the United States in Washington D.C. When annual compost sales revenues exceed \$350,000, Veolia shares the revenue above this level with Baltimore City on a 50/50 basis. Due to the success of the marketing program, revenues have been shared each year since 2000.

*Congratulations!*

## Baltimore City Composting Partnership BIOSOLIDS COMPOSTING



## MEETING AGENDA 2005

January 19, 2005  
March 16, 2005  
May 18, 2005  
July 20, 2005  
September 14, 2005

## WANTED: Tour or Event Ideas

Do you have any ideas for a tour or event that might be of interest to Chapter members?

If so, please let us know! Contact Mike Houlihan at [mhoulihan@geosyntec.com](mailto:mhoulihan@geosyntec.com).

## SWANA Mid-Atlantic Chapter Board Thanks Its Outgoing Directors

In September 2004, at the Annual Meeting, a new board was elected by the members of the Chapter. The Board would like to thank the departing directors for their service: Hedy Alavi of Johns Hopkins University; James Law of SCS Engineers; and Dan Williams of Calvert County.

Hedy has served as an invaluable resource over the years providing an academic perspective, and supporting the Chapter's scholarship program. His shoes will be difficult to fill. The Board sincerely appreciates the work he has contributed to making the Chapter a success!

James was Secretary of the Board for the last four years, and participated as a Director for two years prior to that. His hard work is greatly appreciated and the Board wishes him all the best in his new home, Raleigh,

North Carolina. The Board thanks James for all of his efforts these past six years, and for making sure "Thomson" was always spelled correctly in the meeting minutes!

Dan has most recently served as Past President, and of course, as President prior to that. During his time on the Board, Dan played an integral role in event planning and coordination. The Board wishes him all the best on his retirement and hopes to see him at the Crab Feast!

For the coming year, the Board welcomes: Francis Jones of Calvert County; Thomas Houska of the Delaware Solid Waste Authority; and Dana Murray of SCS Engineers. In addition, the Board appointed Elizabeth Smolen of Prince Georges County to fill the vacancy.

## 2004 SWANA International Road-E-O

Charles Farmer, Baltimore County, represented the SWANA Mid-Atlantic Chapter with a win at the International Road-E-O in Denton, Texas, this past August. He took third place in the Landfill Road-E-O Rubber Tire Loader Competition.

Our sincerest congratulations go out to Mr. Farmer!

### YOUR AD HERE

The Chapter is accepting ads (2" x 3.5") that will run in four consecutive quarterly newsletters for the low price of \$100. If you are interested in placing an ad, please contact Laura Thomson at [lthomson@nmwda.org](mailto:lthomson@nmwda.org).

**METTLER TOLEDO**

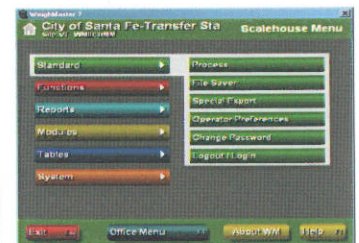
#### David Baechtold

Vehicle Scale Specialist  
(410) 990-0248  
Fax: (410) 990-0360  
[dave.baechtold@mt.com](mailto:dave.baechtold@mt.com)

Mettler-Toledo, Inc.  
912 Langdon Ct.  
Annapolis, MD 21403  
[www.mt.com](http://www.mt.com)

### Information Systems, Inc. WeighMaster 7®

Information Systems, Inc. offers solid-waste scale software for landfills, transfer stations, and WTE plants.



The WeighMaster System offers accounting and reporting. ISI provides both fully and partially automated systems.

[www.isi-infosys.com](http://www.isi-infosys.com)

### Mid-Atlantic Chapter – Solid Waste Association of North America

c/o Laura Thomson  
Northeast Maryland Waste Disposal Authority  
Tower II - Suite 402, 100 South Charles Street, Baltimore, Maryland 21201-2705  
Tel. (410) 333-2730 • Fax. (410) 333-2721



# SWANA Mid-Atlantic Chapter Congratulates Two Employees of the DE Solid Waste Authority

N.C. Vasuki and Anne Germain (former Mid-Atlantic Chapter President) of the Delaware Solid Waste Authority have each been honored by the solid waste industry in the last few months.

Mr. Vasuki, an internationally-respected figure in the solid waste industry, has been elected president of the International Solid Waste Association. The Chapter congratulates NC on this formidable achievement!

At WASTECON in Phoenix this past Septem-

ber, Ms. Germain was elected as the Technical Division representative on the SWANA International Executive Committee. "I am extremely pleased to welcome Anne as our new technical division representative," says John Skinner, executive director and CEO of SWANA. "Her insight into the solid waste field and her knowledge and dedication to our association will be a valuable asset to our association." Congratulations, Anne!

## Grants Available to Help Communities Manage Solid Waste

The U.S. Department of Agriculture (USDA) Rural Utilities Service is accepting applications for its Solid Waste Management Grants. These grants may be used to:

- Evaluate current landfill conditions to determine threats to water resources;
- Provide technical assistance and/or training to enhance operator skills in the operation and maintenance of active landfills;
- Provide technical assistance and/or training to help communities reduce the solid waste stream; and
- Provide technical assistance and/or training for operators of landfills which are closed or will be closed in the near future with the development and implementation of closure plans, future land use plans, safety and maintenance planning, and closure scheduling within permit requirements.

Local governments eligible for Rural Utilities Service (RUS) water and waste financial assistance in accordance with RUS Regulation 1780, Part 7 can apply. Applications are due December 21, 2005. For more information, contact Stephen Saulnier at 202/690-2526 or [ssaulnie@rus.usda.gov](mailto:ssaulnie@rus.usda.gov). You can read the full grant announcement at [www.lgean.org](http://www.lgean.org).

## Recent Bid Awards

Anne Arundel County has recently awarded the following bids:

1. **Tandem Wheel Dump Truck** with drop axle with plow and salt spreader—International, \$127,747.00
2. **Conventional Cab Tractor** with wet line system—Peterbilt, \$85,193.00
3. **Auger Style Stationary Compactor** (two), \$95,732.24
4. **40-Cubic Yard Octagon Cans** for Auger Style Compactor Units (four), \$29,456.00
5. **Tandem Axle Tanker Water Truck**—Mack, \$146,514.00
6. **Compost Windrow Turner**—4WD—Wildcat, \$216,420.00
7. **Gasoline Utility Vehicle**—Ingersoll-Rand, \$10,400.00
8. **45-Cubic Yard Open Top**—Roll off containers (seven), \$36,750.00
9. **Hot Water Pressure Washer** (two), \$3,983.42

Any questions, please contact Tom Hayes, Maintenance Supervisor (410) 222-6108.